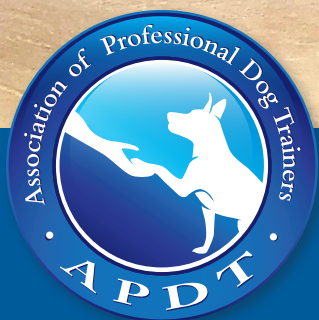


29th Annual APDT/CAPDT Educational Conference & Trade Show

Oct. 19–21, 2022
Daytona Beach, Florida



*Celebrating 29 years as the premier conference for dog
training and behavior consultation professionals*

Speakers & Agenda | Continuing Education | Events & Extras
Hotel & Travel | Registration Info



Thank You to Our Sponsors



Pet Products



Supporting Organizations





Speakers & Agenda



Approved
Educational
Provider

APDT is a CCPDT Approved
Educational Provider

Tuesday, October 18

WORKSHOPS (See CEU values on page 9 of this guide)

*Workshops have limited space available

**Pre-registration and separate fee applies

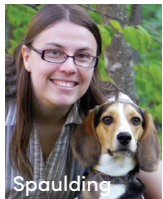


Improving Outcomes and Promoting Well-Being Through Choice

Irith Bloom, CPDT-KSA, CBCC-KA, CDBC, CSAT, KPA CTP, VSPDT, CBATI, FFCEP (Trainer), VSDTA Faculty, DWA Faculty, and Kristina Spaulding, Ph.D., CAABI

In this hands-on workshop, Kristina Spaulding, Ph.D., and Irith Bloom will help you understand how providing animals with a variety of choices impacts everything from well-being to learning and behavior. Important scientific principles related to choice and control will help you solidify the foundation on which you base your training. Practical exercises, both

with fellow attendees and hands-on with shelter dogs, will help you apply the information presented. Join us for a special small-group exploration of how choice can transform animals' lives!



Your PORTL to Improving Your Shaping Skills

Mary Hunter, M.S.

What does it take to be a great trainer? What's the best way to practice and improve your own skills or the skills of your human clients? How can you try out new ideas without frustrat-

ing your animal learners? If you've ever asked yourself these questions, then you won't want to miss this hands-on workshop with Mary Hunter. The Portable Operant Research and Teaching Lab (PORTL) is a tabletop shaping game. During this workshop, you'll learn the basics of PORTL. Then, we will use PORTL to explore behavior principles and techniques that will help you create optimal learning situations when working with both animals and people. In addition, Mary will use video examples, short lectures and discussions to help you relate the hands-on PORTL activities back to the teaching you do with your dogs and with your human clients. The workshop will give you new ideas about shaping behavior, strategic reinforcement delivery, mechanical skills, timing, and capturing and transferring actions.



Pet Tech™ Pet Tech's Pet CPR & First Aid Emergency Workshop

Beth Bowers, CPDT-KA, CMPTI, CPPS, CTDI

Attendees will cover more than 50 actions for survival and information to help keep your dogs and cats happy and healthy. Additionally, the class includes a comprehensive 40+ page

PetSaver™ Handbook, and upon successful completion each participant will receive a certificate. Students will learn all four



types of Canine and Feline CPR, Emergency Restraint and Muzzling, Rescue Breathing, Choking Management, Shock Management, Bleeding Protocols, Poisoning, Snake Bites, Insect Bites and Stings, Pet First Aid Kit Contents, Priorities of Care, Primary Pet Assessment, Snout-To-Tail™ Wellness and Injury Assessments, Heat and Cold Injuries, Assessing Pet's Vital and so much more. This is a hands-on workshop, which means you will leave knowing exactly how to save a pet's life and even better, be able to prevent more emergencies from happening in the first place. Get ready to have some fun and take your career and pet care to a whole new level.

Wednesday, October 19



OPENING KEYNOTE: Professionalism Bites: How to use being authentic online to promote your business

Jiovany Alcaide, CPDT-KA, IAABC-ADT, and Taylor Barconey, CPDT-KA, IAABC-ADT

Find social media intimidating? Don't think your stuff is good enough? Yeah, imposter syndrome can be a real stinker. But guess what, it's 2022 and if you're sleeping on social media, you're doing your business a real disservice. However, social media is not nearly as serious as you think it is. Learn how presenting your most authentic self online can actually drive sales and make for a much more enjoyable social media experience.



Accelerate Your Teaching and Training with PORTL

Mary Hunter, M.S.

PORTL (the Portable Operant Research and Teaching Lab) is an interactive tabletop game that helps you improve your shaping skills. It also is a great tool you can use when teaching

others about reinforcement, shaping, chaining, cues, mechanical skills, timing and lots more. In this session, you'll learn the basics of PORTL and see some video examples of PORTL in action. By the time you leave, you'll be itching to find a partner so that you can practice shaping some behaviors using PORTL!



Speakers & Agenda

Wednesday cont.



Choice and Training

Irith Bloom, CPDT-KSA, CBCC-KA, CDBC, CSAT, KPA CTP, VSPDT, CBATI, FFCP (Trainer), VSDTA Faculty, DWA Faculty, and Kristina Spaulding, Ph.D., CAAB

NOTE: This session is a prerequisite to attend any of the three Active Learning sessions and involves interaction with other attendees

Choice, control and agency are buzzwords these days, but have you ever wondered why they make such a difference? Learn more about how increasing choice can affect everything from health to learning and be-

havior. You'll get a peek into the science behind why choice is so important, as well as tips on how to improve behavior by thoughtfully changing an animal's environment. Find out even more by joining one of the active learning sessions associated with this talk.



How to ADD Dog Sports to Your Current Training Business

Jamie Bozzi, CBCC-KA, CPDT-KSA, KPA CTP, ACDDBC, CNWI, AKC Evaluator

Increase your revenue and take your clients on a fun and educational journey. Simple dog sport games can help improve basic manners and expand a dog's behavior repertoire.



POWER HOUR with Jiovany Alcaide, CPDT-KA, IAABC-ADT, and Taylor Barcone, CPDT-KA, IAABC-ADT

Join Jiovany and Taylor, our opening keynote presenters, for a small intimate lunch. This is an opportunity to get to know these speakers, ask questions and network with other attendees.

To attend this event, you MUST pre-register at the time of registration or by contacting member services prior to the conference at 800-738-3647. Cost is \$25 per person and includes a \$10 food voucher.



Dog Bite Investigations and Aggression Evaluations

Retired Lieutenant James W. Crosby, B.S., M.S., CBCC-KA, CDBC

In this class, we will get into the nitty gritty of investigating dog bite cases – assessment of the wounds and circumstances and evaluation

of the dog(s) involved. Jim brings extensive experience in dog bite investigation, from minor annoyance bites to the worst of the worst, and hands-on work with dogs, owners, victims and legal authorities. Learn how and why dogs bite and what we as behavior professionals can do about them.



Going to BAT for All Dogs: Intro to BAT for dog reactivity and puppy socialization

Grisha Stewart M.A., CPDT-KA, KPA CTP

A common mistake in dog training is to distract dogs from triggers, rather than empowering them to be fully functional adult members of society. Behavior Adjustment Training (BAT) begins by creating empowering scenarios in which dogs experience safety and freedom. From this foundation, dogs naturally develop curiosity to explore the edges of their comfort zone, and the human's role is to be a secure base of safety and connection. In this talk, Grisha will explore the values that drive her development and fine-tuning of BAT. She'll also use video and live leash work to demonstrate the most up-to-date techniques in the BAT toolbox, including key BAT leash skills, the new leash belay survival skill, co-regulation strategies, and BAT set-up examples.



Teaching Humans: Welcome to dog training

Joey Iversen, CBATI, CPDT, KPA CTP, UW-AAB, TAGteach Faculty

Understanding and incorporating the fundamentals of TAGteach (Teaching with Acoustical Guidance) to develop confident, independent, creative human learners in your dog training classes. This information will be valuable to you in your private lessons, groups lessons and even for your own training with your animals.



Active Learning Session 1: Choice and Training – Behavior Issues

Irith Bloom, CPDT-KSA, CBCC-KA, CDBC, CSAT, KPA CTP, VSPDT, CBATI, FFCP (Trainer), VSDTA Faculty, DWA Faculty, and Kristina Spaulding, Ph.D., CAAB

NOTE: The Choice and Training session on Wednesday morning is a prerequisite for this session. This active learning session involves interaction with other attendees. Attendance is capped at 60 attendees (first come, first served) we ask that you only attend one.



Choice, control and agency are buzzwords these days, but have you ever wondered why they make such a difference? This is the first of three active learning sessions where you will be engaging with other attendees to solidify and deepen your understanding of choice, and specifically how it can be used to address behavior issues. You'll get a peek into the science behind why choice is so important, as well as tips on how to improve behavior by thoughtfully changing an animal's environment. Explore different strategies for tackling problems such as excessive barking, aggressive behavior and more, in this active, creative setting. You'll leave these sessions with a few new tricks up your sleeve for working behavior cases!



Best Tech Tools to Help Run Your Business Bill Dotson

Bill will provide attendees with the best tech tools and tips to assist you in running an efficient business online. Running a business post-pandemic can be tricky, and Bill will give some great ideas to move your business to the next level.



How to Add a Membership Program to Your Dog Training Services Robin Bennett, CPDT-KA

Memberships are booming in all industries, and the pet care industry is no exception. Don't be left behind in implementing some form of membership to increase revenue and

brand loyalty to your dog training business. With increasing expenses, rising gas costs and staff hiring challenges, memberships are one of the best ways to safeguard your business against loss of revenue. In this session we will give examples of membership options for any dog training business and provide ways to take your current membership to the next level. In today's post-COVID world, adding a membership is one of the easiest ways to generate more revenue to your current clients and build a base of raving fans.

Thursday, October 20



Find Your Crew and a Happier Training Life: Avoiding burnout while facing the challenges of being a dog trainer professional

Panel members:

Irith Bloom, CPDT-KSA, CBCC-KA, CDBC, CSAT, KPA CTP, VSPDT, CBATI, FFCP (Trainer), VSDTA Faculty, DWA Faculty;

Fanna Easter, CPDT-KA, KPA CTP, CSAT, CDBC;

Heidi Meinzer, JD, CPDT-KA, CNWI;

Joann Rechline, M.S., M.P.H., RN, CPDT-KA, FDM, FFCP, CSAT;

Kristina Spaulding, Ph.D., CAAB;

Megan Stanley, CPDT-KSA, CBCC-KA; and

Camille Ward, M.S., Ph.D., CAAB

Working with dogs professionally is challenging! While many friends and family think we play with puppies all day, our job involves dealing with lots of overwhelmed people and stressed-out dogs. The only ones who understand the pressures of our jobs are fellow dog professionals, yet we are frequently isolated from each other. The key to avoiding burnout is finding support and friendship. Discover how seven dog professionals came together to help each other navigate challenges, get through rough patches and celebrate wins. Attendees will gain a better understanding of the pitfalls of being a solo dog professional and learn how finding and aligning with a group of like-minded individuals can improve your quality of life and job satisfaction.

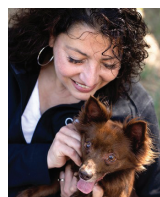


Loose Leash Walking: The dance dissected

Kiki Yablon, KPA CTP, CPDT-KA

Early in my career, a trainer friend joked that she was going to write a book called "Mastering Loose-Leash Walking in Only Two Years!" It's funny because it's true – or can be.

Modern, dog-centered loose-leash walking is not the single, homogeneous behavior of simply trotting by your side, but rather one of the most complex things that we ask our dogs to do with us. It's an improvised dance that involves two parties making decisions moment by moment, in response to each other and an ever-changing environment. Like any improvised performance you would want to watch, it requires a suite of interlocking prerequisite skills, for both handler and for the dog, that need to be generalized across many situations. In this session, Kiki will talk about what equipment may facilitate this learning from the get-go and why (spoiler alert: a longer leash for almost all types of walking); organize and break out critical component skills for both dogs and handlers; and discuss how to teach some of the ones that she thinks are often overlooked.



Separation Anxiety – From Training Pariah to Hidden Gem

Malena DeMartini-Price, CTC

Working with separation anxiety was once considered a bit of a pariah, and few dog

Sponsored by:



professionals would even consider taking these cases. With the profound changes in awareness, treatment application, remote tool use and mounting research findings, this behavior issue has truly evolved to be the hidden gem in the dog training industry. Learn about working with these challenging yet fascinating cases that are exceptionally rewarding.





Speakers & Agenda

Thursday cont.



How Behavior Consultants and Trainers Can Integrate with Shelters and Authorities Locally

Retired Lieutenant James W. Crosby B.S., M.S., CBCC-KA, CDBC

Many shelters, and most law enforcement agencies, are without professional canine behavior support. This can run from training questions and behavior problems in surrendered or stray dogs to assisting with dog bites and community nuisance issues. Jim has worked with agencies around the world on various challenges, from bites to dog fighting to remediation training and simple safe handling of aggressive animals. This class will discuss how, and when, behavior consultants and trainers can assist with challenging cases.



How to TEACH Beginner Dog Sports

Jamie Bozzi, CBCC-KA, CPDT-KSA, KPA CTP, ACDBC, CNWI, AKC Evaluator

This presentation is valuable for dog trainers because you will learn creative ways to incorporate foundation level dog sport games into your curriculum and/or current services.

Whether you teach group classes or do private consultations, you can help pet owners discover their dogs' superpowers. Dog sport games and other innovative dog activities are fun for both dog and pet parent. These games and exercises are also easy – anyone can implement them.



How to Recover from Unexpected Changes in Your Life

Bill Dotson

Are you a small business owner or the only employee in your business? Be prepared to set your business up to keep running should you experience a health issue or a pandemic. Bill

will explain his experience with his small company during a personally challenging time that gave him a new outlook on what to change to prevent risks to his business. As a small business owner, Bill learned there are many things he did not think of and how his mindset has changed in running his small business.



POWER HOUR with Tim Lewis, Ph.D.

Join Tim Lewis, Ph.D., for a small intimate lunch and get the opportunity to ask questions and network with other attendees. Tim is an eco-biologist; professor of biology at the University of St. Thomas, St. Paul, Minnesota; and a widely published research scientist.

To attend this event, you **MUST** pre-register at the time of registration or by contacting member services prior to conference at 800-738-3647. Cost is \$25 per person and includes a \$10 food voucher.



Active Learning Session 2: Choice and Training – Communicating with Clients

Irith Bloom, CPDT-KSA, CBCC-KA, CDBC, CSAT, KPA CTP, VSPDT, CBATI, FFCEP (Trainer), VSDTA Faculty, DWA Faculty, and Kristina Spaulding, Ph.D., CAAB

NOTE: The Choice and Training session on Wednesday morning is a prerequisite for this session. This active learning session involves interaction with other attendees. Attendance is capped at 60 attendees (first come, first served); we ask that you only attend one.

Do you come up with great training plans but struggle to get clients to follow them? You are



not alone! In this active learning session, Kristina Spaulding, Ph.D., and Irith Bloom will share some of their strategies for getting human clients on board with the idea of increasing choice for their animals. Be prepared to share ideas – and do a little roleplay– with fellow attendees as you explore different techniques. Spoiler alert: It helps to give human clients more choices, too.



Aggression on the Inside and Out: Bites of biology and behaviorism

Tim Lewis, Ph.D., and Michael Shikashio, CDBC

When working with aggression cases, it is crucial to evaluate what an animal may be experiencing both internally from a biological perspective, as well as externally by assessing the environmental conditions. This robust approach to understanding the influences on behavior can encourage more successful outcomes when addressing problem behaviors such as aggression. For this enlightening session, eco-biologist Tim Lewis, Ph.D., and aggression specialist Mike Shikashio, CDBC, will



highlight the “inner and outer” factors that may impact aggressive behavior in dogs, from a biologist lens and a behaviorist lens. From antecedent to amygdala or consequence to cortisol, this presentation will be a deep dive into aggression. So bring your observational skills to this fun and interactive talk where we will dissect and assess a variety of aggressive behaviors.



Canine Colors for Humans

Beth Bowers, CPDT-KA, CMPTI, CPPS, CTDI

This session will provide you with a fun new way to look at personality testing for dogs and the colorful humans who own them and work with them. Have you ever considered why a particular client seems to not be on the same

page as you? Have you ever wished you could find a simplified way to work better with your employees or team members? Canine Colors is a fun, easy-to-use method for building strong relationships and enhancing communication among your team or your clients. And it has an added fun feature of being able to help people understand their dogs on a whole different level, and even better, help you pair people with the right dog for their personality.



Broader Perspectives, Better Training

Curtis Kelley, CPDT-KA

We explore the ways dog training as an industry as well as underserved communities at large can benefit from a more diverse population of dog trainers.



Protecting Your Business from Fraud

Timothy J. O'Toole, CFE, CPA

Tim's presentation will revolve around current events, fraud stats affecting small business and then some specific tips for the participants to consider in their businesses to, hopefully, avoid being victims of fraud. There

will be time set aside for Q&A.



Why Can't We All Just Get Along? Understanding conflict in multi-dog households

Camille Ward, M.S., Ph.D., CAAB

Dogs living in multi-dog environments must balance cooperation and conflict to maintain the integrity of valuable social relationships.

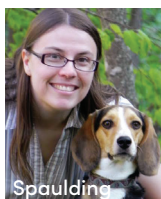
Social animals, including dogs, have evolved ways to manage conflict within groups because it is not adaptive for minor conflicts to turn into fights that routinely result in serious injuries to one or both parties. However, we know that not all dogs within a household can successfully manage conflicts and live together in peace. In this presentation, Camille will examine the research on conflict management and reconciliation in dogs, and drawing from her own case files, she'll discuss ways to evaluate and work with household dogs who don't get along with one another.

Friday, October 21



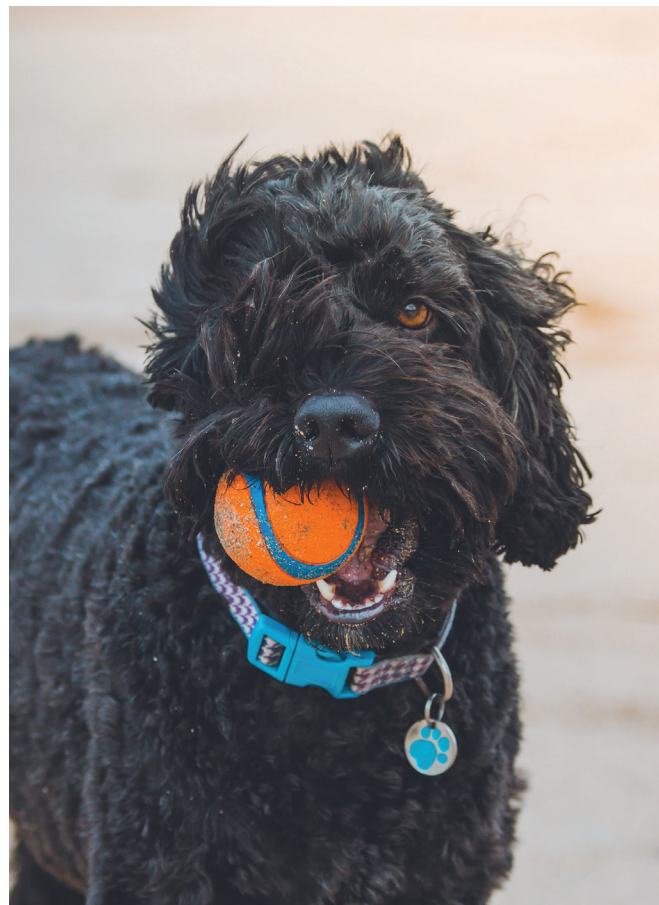
Active Learning Session 3: Choice and Training – The Shelter/Rescue Environment

Irith Bloom, CPDT-KSA, CBCC-KA, CDBC, CSAT, KPA CTP, VSPDT, CBATI, FFCEP (Trainer), VSDTA Faculty, DWA Faculty, and Kristina Spaulding, Ph.D., CAAB



NOTE: The Choice and Training session on Wednesday morning is a prerequisite for this session. This active learning session involves interaction with other attendees. Attendance is capped at 60 attendees (first come, first served) we ask that you only attend one.

Do you work with animals at an animal welfare center or rescue group, either as staff or as a volunteer? Do you wish you could do more to reduce stress on the animals in your care? If so, this active learning session is for you! Join Kristina Spaulding, Ph.D., and Irith Bloom as they facilitate discussion and take you through a variety of activities that will help you find ways to improve the lives of the animals you see at your rescue or shelter.



How to Recover from Unexpected Changes in Your Life

Bill Dotson

Are you a small business owner or the only employee in your business? Be prepared to set your business up to keep running should you experience a health issue or a pandemic. Bill will explain his experience with his small company during a personally challenging time that gave him a new outlook on what to change to prevent risks to his business. As a small business owner, Bill learned there are many things he did not think of and how his mindset has changed in running his small business.



Separation Anxiety – The Epidemic Within the Pandemic?

Malena DeMartini-Price, CTC

There has been a lot of talk about separation anxiety becoming an epidemic due to the

pandemic, but is that what has influenced the increase in these cases? We'll look at the various aspects that are affecting the pet dog population and the opportunities that now exist. There has never been a better time to learn more about working with separation anxiety dogs.





Speakers & Agenda

Friday cont.



Muscling In on Dog Mobility

Tim Lewis, Ph.D.

Muscles. That's all a dog needs to move. Oh, and bones, because without them all you have is a quivering mass of fibers. I suppose you have to feed the muscles, too, and get their waste products out of there. But that's all you need. Come to think of it, a nervous system to coordinate them would help, too. The biology of muscles is integrated with a lot else going on in dogs. However, you have to understand muscles and the bony framework they attach to if you live or work with dogs. This look at the biology of muscles, with the canine athlete in mind, will be relevant to any dog (and therefore anyone who works with dogs, lives with dogs or just wants to learn more about dogs).



Nutrition and Behavior: The two most controversial pet dog topics and how they intertwine

Amy Pike, DVM, DACVB

If you want to pick two of the most controversial topics among pet dog owners and small animal veterinarians, it would be nutrition and behavior. With so many myths abounding, what is one to do when those two topics collide? In this talk we will delve into the role that nutrition plays in behavior problems, and what the current recommendations are for appropriate nutrition of pet dogs.



TAGteach in Action: Ready to Talk Less and Teach More?

Joey Iversen, CBATI, CPDT, KPA CTP, UW-AAB, TAGteach Faculty

This session will give you the opportunity to practice the TAGteach fundamentals to:

- Tell your human learner exactly what you want them to do
- Communicate without nagging or reminders
- Empower the learner to participate more in their own learning
- Incorporate TAGteach to supercharge your learning environment and bring more success and fun to your learners



POWER HOUR with Lt. Jim Crosby, (retired), B.S., M.S., CBCC-KA, CDBC

Join Jim for a small intimate lunch and get the opportunity to ask questions about his experience in aggression, both by canines and law enforcement, and network with other attendees.

To attend this event, you MUST pre-register

at the time of registration or by contacting member services prior to conference at 800-738-3647. Cost is \$25 per person and includes a \$10 food voucher.



Canine Colors for Canines

Beth Bowers, CPDT-KA, CMPTI, CPPS, CTDI

Have you ever wondered why a particular dog isn't quite working in your class or home environment? Canine Colors is a fun easy-to-use method to look at personality testing for dogs that will help your clients understand their dogs on a whole different level.



Stimulus-Stimulus Pairing: Mind the Gap

Kiki Yablon, KPA CTP, CPDT-KA

"Stimulus-stimulus pairing" is often used interchangeably with "classical conditioning." But the first term simply describes what the trainer does, while the other implies an intended effect of the procedure. Leaving aside the trainer's intentions and looking with clear eyes at what happens when we arrange for one stimulus to predict another can open the door to some effective and creative teaching and problem-solving approaches. I'll review some behavioral research and share some experiences where paying attention to what happens before, after or smack dab in the middle of the pairing – in the "gap" between stimuli, minuscule as it may be – have made pairing procedures more effective and led to client-friendly shortcuts for teaching operant behaviors.



CLOSING KEYNOTE: Fulfilled, and Happy!

Michael Shikashio, CDBC

Many of us get into dog training because, well, we want to work with and help dogs. We envision of all the wonderful outcomes for dogs and their guardians that we can make happen through training. Play with puppies all day! Teach cool tricks! Win dog sports titles! Living the dream as they say! And then the harsh reality of running a business brings a wake-up call, like your dog dry-heaving before vomiting at three in the morning. Marketing to get clients, managing client participation, accounting and bookkeeping, learning new technology, avoiding burnout and compassion fatigue, keeping up with CEUs, and being able to pay the rent at the end of the month, all come crashing down. "They didn't teach me this stuff when I was learning about operant conditioning!" you might proclaim. Running a profitable business where you feel fulfilled, successful, and most of all happy, does not have to be taboo. For the keynote presentation, Michael Shikashio will highlight his journey from "taking a basic training case or two per month" to building an internationally recognized global company, while giving tangible strategies for growth, and even discussing some of the mistakes he made that can be avoided. So, grab your favorite notepad, sit back and be prepared to take your business to the next level.

Sponsored by:





2022 Continuing Education Units

CEU Information – Continuing education units are required of various certificants to maintain their credential status. The APDT Conference has received approval for certificants of the organizations indicated below.

Please note that APDT will process conference CEUs up to one year from the conference date. It is the responsibility of the attendee to make sure they have requested CEUs and they appear on their account(s). New for the 2022 conference, CEUs must be requested by attendees; they are NOT automatically processed. This process will be posted in the conference program.

Requesting CEUs		
IAABC	CCPDT	KPA, IACP, NADOI, NACSW
Complete the CEU request form provided at conference and turn it in at the registration desk. The CEU request will be processed after the completion of conference, and you will be emailed a validation code to submit to IAABC.	Complete the CEU request form provided at conference and turn it in at the registration desk. The CEU request will be processed after the completion of conference. You MUST provide your CCPDT certificate number to have CEUs issued.	Conference attendees will be provided with a link to download a conference certificate of attendance to present to their certifying body.

CEUs for Seminars Only

General sessions, breakout sessions, presentations, lectures, demonstrations or other educational content that does NOT include hands-on interactivity with live animals

Seminars	CCPDT, IAABC, KPA, IACP, NADOI
Live Conference	22
8 Conference Sessions On-Demand (after conference is over, watch 8 sessions on demand)	8
Full Conference On-Demand	30
Daily In-Person	
Wednesday	7.5
Thursday	7
Friday	7.5



Workshops

Workshop	KPA	IAABC	CPDT-KA	CPDT-KSA	CBCC-KA
Your PORTL to Improving Your Shaping Skills	6.5	6.5 Lecture	6.5 Knowledge	6.5 Knowledge	6.5 Knowledge
Improving Outcomes and Promoting Well Being Through Choice	8	3.5 Lecture 3 Hands-On	3.5 Knowledge 3 Skills	3.5 Knowledge 3 Skills	3.5 Knowledge 3 Skills
Pet Tech™ Pet Tech's Pet CPR & First Aid Emergency Workshop	7.5	N/A	3 Knowledge 3 Skills	3 Knowledge 3 Skills	3 Knowledge 3 Skills

This information is subject to change.





Events & Extras

Special Events

The conference offers many special events. Join in and meet up with old friends and make some new ones.

Swag Bag Stuffing Party Tuesday, Oct. 18

RSVP to be a part of the Attendee Bag Stuffing Team! Contact Nita Briscoe at nita.briscoe@apdt.com by Aug. 15 to reserve your time slot.



REGIception Tuesday, Oct. 18

As you pick up your packet, enjoy some light appetizers and beverages as you meet and mingle with attendees.

Be sure to check the conference website at apdt.com/apdt-conference-2022/ for exciting events and programs that are being added for Daytona.

Exhibit Hall Activities

"Best In Show" Exhibit Hall for Pet Professionals

See premier products, trends, treats and services in the pet professional industry. The Exhibit Hall will be open Wednesday–Friday with plenty of time scheduled to visit the show floor.



Wednesday, October 19

Noon–1:30pm
5–7pm: ZIWI Welcome Reception

Thursday, October 31

8–9:30am
10:30am–2:30pm
3–5pm

Friday, November 1

8–11am
Noon–2pm: Yappy Hour Reception

ZIWI Welcome Reception Beach PAWty Wednesday, Oct. 19, 5–7pm

We wrap up our first day with a Beach PAWty! Hors d'oeuvres and a cash bar will feature a specialty drink at the ZIWI Welcome Reception. Come for the treats and see some tricks in the Blue-9 Demo Area during the reception.



Yappy Hour (Last Call for Exhibit Hall)

The 2022 Exhibit Hall will close Friday afternoon at 2pm. Our silent auction (to benefit the APDT Foundation) also closes Friday afternoon. Concessions will be open for purchase and desserts will be supplied at Yappy Hour. Cheers to a great week!

Blue-9 Demo Area

Our Blue-9 Demo



Pet Products

Area will be even bigger this year! Our first Demo is during the ZIWI Welcome Reception, and our last Demo is during Yappy Hour in the Exhibit Hall. Watch fabulous trainers demonstrate how to use the KLIMB training platform from Blue-9 Pet Products to train tricks, improve your canine's fitness level and solve problem behaviors in the home. The Blue-9 Demo Area will be an educational and entertaining area in the Exhibit Hall. www.blue-9.com

The APDT Foundation Silent Auction will be available for bidding when the exhibit hall is open, along with a display of the academic/citizen science posters.

Conference Extras

2022 Conference Recordings

Individuals who purchase a full conference registration will have access to the conference recordings after the conference as part of their registration.

The 2022 Conference Program

The conference program will be available to download from the APDT website in PDF form prior to the conference. To move toward a more "green" conference, there will be no printed hard copies of the slide presentations and speaker notes. They will be available for download from the website and app prior to and during the conference.



2022 APDT/CAPDT Annual Educational Conference and Trade Show Registration Form

Please type or print clearly – this information will be used for your name badge.

You can also register online by going to apdt.com/apdt-conference-2022/



NAME _____		APDT MEMBER # _____		DESIGNATIONS _____	
ADDRESS _____		CITY _____		STATE/PR _____	COUNTRY _____
EMAIL _____	BUSINESS PHONE _____	CELL PHONE _____	EMERGENCY CONTACT NAME _____		EMERGENCY CONTACT PHONE _____

First APDT Conference? ☐ Y ☐ N Traveling with a service dog? ☐ Y ☐ N Vegetarian/Vegan? ☐ Y ☐ N

What CEUs will you need? ☐ None ☐ IAABC ☐ CPDT-KA ☐ CPDT-KSA ☐ CBCC-KA CCPDT ID # (required for CCPDT CEUs) _____

List any special needs (due by 9/30/22) _____

PRE-CONFERENCE WORKSHOPS Limited Space Available	
Pet Tech™ Pet Tech's Pet CPR and First Aid Emergency Workshop with Beth Bowers, CPDT-KA, CMPTI, CPPS, CTDI CCPDT Hands-On CEUs: 3 Non hands-on CEUs: 3	
Tues., Oct. 18, 9am–4pm	
Participant <input type="checkbox"/> \$125	\$
Your PORTL to Improving Your Shaping Skills with Mary Hunter, M.S. CCPDT CEUs: 6.5 (No hands-on)	
Tues., Oct. 18, 9am–4:30pm	
Participant <input type="checkbox"/> \$80	\$
Improving Outcomes and Promoting Well-Being Through Choice with Irith Bloom, CPDT-KSA, CBCC-KA, CDBC, CSAT, KPA CTP, VSPDT, CBATI, FFCEP (Trainer), VSDTA Faculty, DWA Faculty, and Kristina Spaulding, Ph.D., CAAB CCPDT Hands-on CEUs: 3 Total CEUs: 6.5	
Tues., Oct. 18, 8:30am bus departure from hotel to 4pm	
Participant <input type="checkbox"/> \$125	\$

POWER HOUR Ocean Center Limited Space Available Includes \$10 Concessions Voucher	
Jiovary Alcaide, CPDT-KA, IAABC-ADT, and Taylor Barconey, CPDT-KA, IAABC-ADT	
Wed., Oct. 19, 12:30–1:30pm	
Participant <input type="checkbox"/> \$25	\$
Tim Lewis, Ph.D.	
Thurs., Oct. 20, 1:15–2:15pm	
Participant <input type="checkbox"/> \$25	\$
Jim Crosby, M.S., CBCC-KA	
Fri., Oct. 21, 12:30–1:30pm	
Participant <input type="checkbox"/> \$25	\$
POWER HOUR SUBTOTAL	\$

CONFERENCE FEES: OCTOBER 19-21, 2022 Early Registration Ends August 1, 2022									
	Premium Professional Member		Professional Member		Supporting Member		Non-Member		• Student • Shelter/Rescue Volunteer • Active Military/Veteran
	Early	Regular	Early	Regular	Early	Regular	Early	Regular	
1 Day	\$280	\$340	\$310	\$370	\$325	\$385	\$345	\$405	All 3 Days: \$175
2 Days	\$360	\$420	\$390	\$450	\$405	\$465	\$445	\$505	
All 3 Days	\$440	\$500	\$470	\$530	\$485	\$545	\$545	\$605	
I will be attending <input type="checkbox"/> Wednesday, Oct. 19 <input type="checkbox"/> Thursday, Oct. 20 <input type="checkbox"/> Friday, Oct. 21									
CONFERENCE FEES SUBTOTAL									\$

T-SHIRTS AND HOODIES									
2022 Conference T-shirts and hoodies must be purchased by Tuesday, September 7, at 5:00 pm EST. No conference apparel orders will be taken after that date.									
Item	Quantity Desired of Each Size						Price Each	Total Qty	Total
T-shirt	S	M	L	XL	XXL	XXXL	\$25		\$
Hoodie	S	M	L	XL	XXL		\$40		\$
T-SHIRT AND HOODIE SUBTOTAL									\$

ACTIVE LEARNING SESSIONS Irith Bloom, CPDT-KSA, CBCC-KA, CDBC, CSAT, KPA CTP, VSPDT, CBATI, FFCEP (Trainer), VSDTA Faculty, DWA Faculty, and Kristina Spaulding, Ph.D., CAAB Ocean Center Limited to 1 Learning Session Limited Space Available	
Choice and Training – Behavior Issues	
Wed., Oct. 19, 3:15–4:30 pm	
Participant <input type="checkbox"/> No charge	
Choice and Training – Communicating with Clients	
Thurs., Oct. 20, 2:15–3:45 pm	
Participant <input type="checkbox"/> No charge	
Choice and Training – The Shelter/Rescue Environment	
Fri., Oct. 21, 9:00–10:30 am	
Participant <input type="checkbox"/> No charge	

TOTALS	
Conference Fees	\$
Workshop Fees	\$
Power Hour Fees	\$
Active Learning Session (no charge)	
T-Shirts and/or Hoodie Fees	\$
APDT Foundation Muddy Paw Pin (\$20)	\$
TOTAL DUE	\$

Registrations will not be processed without payment. Make checks payable to APDT. Credit card payment can only be accepted by phone for security reasons. Please call 800-PET-DOGS.

APDT is please to offer a payment plan option. Registration fees can be split into monthly payments and all payments must be received in full prior to August 1, 2022. Please contact the APDT office at 800-PET-DOGS or apdt@apdt.com for more information.

Please mail completed registration (with check payment only) to:
 APDT, 2365 Harrodsburg Road, Suite A325
 Lexington, KY 40504

2022 APDT/CAPDT Annual Educational Conference and Trade Show Policies

Video/Audio Taping and Photography Policies in Session Rooms

APDT reserves all video/audio taping and photography rights at this educational conference. No video or audio taping is permitted in session and workshop rooms.

Conference Cancellation Policies

All cancellations must be made in writing and post marked or e-mailed no later than September 19, 2022, for a refund. Cancellations post marked or e-mailed by September 19, 2022, will receive a refund less a \$75.00 processing fee. Cancellations post marked or emailed after September 19, 2022, and no shows, will not receive a refund.

Submit your cancellations to the APDT Registration Office in writing using one of the following:

Email: conference@apdt.com

Mail: APDT, 2365 Harrodsburg Road A325, Lexington, KY 40504, USA

You will receive confirmation of your cancellation no later than 48 hours after it is received by the APDT Conference Office. If you do not receive this notification, you should re-contact the office.

Please remember that canceling your registration does not automatically cancel your hotel reservation and travel arrangements. Individuals are responsible for canceling their own hotel and travel reservations.

COVID-19

APDT is committed to attendee safety and will follow all CDC, local, and venue guidelines when implementing the conference and trade show. APDT will continue to monitor these guidelines and will post updates to attendees if the guidance changes.

Emergency Illness of Registrant

Refunds for general registration (not including fees for workshops, Power Hours, merchandise, etc.) may be granted if a registrant is unable to travel to the conference due to the registrant experiencing a medical emergency where appropriate verification is provided to the APDT office in writing. All such requests must be submitted in writing by October 17, 2022, to be considered. Approved cancellation requests for a registrant with a medical emergency will be refunded the general registration fee less a \$75 processing fee. Requests for refunds under this policy will not be accepted after October 17, 2022.

Registration Fees

If you register at the member rate and do not renew your membership prior to the start of

the conference you will be subjected to the non-member registration rate. If you register at a specific member rate and then change your member class, you will be responsible for the difference in registration rates.

Workshops

I understand that my registration fees cover the cost of registration for the days I will be attending. Attendance at limited admission workshops requires additional fees.

Workshop Cancellation Policy

We rely on an accurate attendance count to make arrangements for our workshops. If you need to cancel your workshop attendance, the cancellation must be made in writing and postmarked or emailed no later than September 19, 2022. Refunds will ONLY be made IF we can fill your reservation for the workshop. No refunds will be available for cancellations after September 19, 2022. Please take this into account when you sign up for a workshop.

Notice About Speakers

Opinions expressed by speakers at the event are their own opinions and do not necessarily represent the view or opinions of the APDT. APDT does not provide technical, software, legal, accounting, tax or other professional services or advice, nor does APDT endorse the accuracy of any opinions or information expressed or provided by speakers at the event.

Conference Apparel

Orders for conference apparel can only be picked-up at the conference when the registration area is open. Items will not be shipped for individuals that cancel their registration, do not show up at the conference or do not pick-up their items at the conference.

Conference Program

All speaker materials and slide show presentations provided to the APDT in advance of the conference will be available for download for attendees from the APDT website prior to the conference. They will not be printed in the conference program. An email will be sent at least two weeks prior to the conference with instructions on how to download the handouts.

APDT Conference Dog Attendance Policy and Service Dog Policy

The APDT Board of Directors established that personal dogs are not allowed at our Annual Educational Conference and Trade Show. This decision was based on concern for the safety and comfort of our canine friends and on our conference format.

Service dogs are an exception to this policy. If you intend to bring a service dog to the conference, you will be asked to review the following information and indicate acceptance of our policies.

Service dogs are covered by Federal Law under the ADA. The behavior of a service dog is the responsibility of the dog's handler at all times and handlers must always be cognizant of their dog's interactions with people and other animals. Service dogs are expected to be on leash, well-behaved and under the handler's control, or if the handler is unable to control the dog for a time, under the control of a designated adult individual. If the handler's disability precludes the use of a leash, harness or other type of tether, the dog must be under the handler's control using voice cues, hand signals or another means of communication.

Please be aware that if your service dog is observed demonstrating aggressive behavior toward a dog or person, you may be asked to remove the dog by the APDT and/or facility and it may not be allowed at the conference. The facility may be obligated to ask you to remove the dog to protect the safety of both people and animals. Aggressive behavior is defined as a constellation of behaviors including:

- Hard stares
- Hackles up
- Pursed lips
- Growling
- Lunging
- Biting

Behaviors that may also lead to being asked to remove the dog are behaviors that may disrupt the facility's ability to conduct business, such as uncontrolled barking, lunging and jumping on people, and bolting from the handler without the ability to be recalled.

Service dogs must be house trained, and handlers are responsible for cleaning up after the animal at all times.

Our policy allowing service dogs does not cover emotional support, comfort animals and therapy dogs, which are not defined as service animals under Title II and Title III of the ADA. It also does not cover service dogs-in-training when the state laws of the conference location do not allow for service dogs-in-training to have the same public access as service dogs. Please review the state laws for this year's location to determine if you are eligible to bring a service dog-in-training.

By attending the APDT/CAPDT Conference on the 19th day of October, 2022 (the "Event") sponsored by the Association of Professional Dog Trainers ("APDT") and the Canadian Association of Professional Dog Trainers ("CAPDT"), I understand and agree that I am assuming all risks regarding the Event including, but not limited to, falls, contact with animals and participants, and any damage caused by animals, participants or guests.

Knowing these facts, I, on behalf of myself, and my heirs, executors and administrators ("Releasing Parties"), release and covenant not to sue and forever discharge APDT and all APDT officers, directors, volunteers and parties associated with APDT and the Event (the "APDT Parties") from any and all claims, foreseen or unforeseen for damages, or liabilities, including attorney's fees and costs, of any kind, by the Releasing Parties or any third parties, including all participants, organizers, officials, members, organizations, and any other person, animals, or organization participating in the Event ("Covered Claims"). Further, I agree to indemnify APDT and the APDT Parties for any and all Covered Claims, for all damages, judgments, and other claims including attorney's fees and costs.

I further grant full permission to APDT and its agents to authorize by them any use of photographs, video, or any other recording of the Event for any purpose.

SIGNATURE _____





The Association of Professional Dog Trainers

2365 Harrodsburg Rd., Suite A325, Lexington, KY 40504

Phone: 1-800-PET-DOGS (1-800-738-3647) | Fax: 864-331-0767 | www.apdt.com

Membership Application

First Name _____ Last Name _____

Title _____

Business Name _____

Mailing Address _____

City _____ State/Province _____ Country _____ Zip Code _____

Email Address _____ Website Address _____

Certifications: Please check all that apply:

Check Off	Certification	Certifying Body	ID Number	Expiration Date
<input type="checkbox"/>	CAAAB	Animal Behavior Society	NA	
<input type="checkbox"/>	CAAB	Animal Behavior Society	NA	
<input type="checkbox"/>	CABC	International Association of Animal Behavior Consultants	NA	
<input type="checkbox"/>	CCAB	Association for the Study of Animal Behavior	NA	
<input type="checkbox"/>	CDBC	International Association of Animal Behavior Consultants	NA	
<input type="checkbox"/>	CPDT-KA	Certification Council for Professional Dog Trainers		
<input type="checkbox"/>	CPDT-KSA	Certification Council for Professional Dog Trainers		
<input type="checkbox"/>	CBCC-KA	Certification Council for Professional Dog Trainers		
<input type="checkbox"/>	NADOI-Endorsed	National Association of Dog Obedience Instructors	NA	
<input type="checkbox"/>	CDTA	International Association for Canine Professionals	NA	
<input type="checkbox"/>	PDTI	International Association for Canine Professionals	NA	
<input type="checkbox"/>	DACVB	American College of Veterinary Behaviorists	NA	
<input type="checkbox"/>	ABCDT-L2	Animal Behavior College	NA	

The APDT office verifies the above certifications with certifying organizations. If a certification is found to be invalid, you will be notified by the APDT office and the listing will be modified.

Mailing Preferences: As a member of the APDT, you will automatically be added to the APDT news email list. Members receive our Speak! email newsletter (two times per month) and its purpose is solely to keep APDT members abreast of important APDT membership updates and news of interest to our membership. If you do not wish to receive any communications from the association, you can update your privacy and trainer search preferences in your online account.

Membership is for a full calendar year from the date application is processed.
Membership dues and *The APDT Chronicle of the Dog* subscriptions are non-refundable.

Please choose a membership level or *Chronicle of the Dog* Subscription:
Professional Premium - \$160* Professional - \$110* Supporting - \$89[†]
The APDT Chronicle of the Dog Subscription - \$50

*Professional Premium and Professional members may opt to receive just the digital version of *The APDT Chronicle of the Dog* for a \$10 discount. Check if desired

[†]Supporting members may opt to receive the print version of *The APDT Chronicle of the Dog* for an additional \$10. Check if desired

For additional information about the membership levels or to purchase a subscription to *The APDT Chronicle of the Dog*, please visit apdt.com/membership.

Check Amount _____ Make checks payable to APDT.

Credit card payment can only be accepted by phone for security purposes. Please call 800-PET-DOGS.

Please mail completed application (with check payment only) to APDT, 2365 Harrodsburg Road, Suite A325, Lexington, KY 40504. Fax: 864-331-0767.

I agree that I have read the APDT Code of Professional Ethics and Standards of Practice and that I confirm my commitment to these guidelines as a condition of my membership in APDT.

Signature _____



The Association of Professional Dog Trainers

2365 Harrodsburg Rd., Suite A325, Lexington, KY 40504

Phone: 1-800-PET-DOGS (1-800-738-3647) | Fax: 864-331-0767 | www.apdt.com

Code of Professional Ethics

Amended July 10, 2018

The Professional Code of Ethics was created to set forth guidelines for members. Any members is subject to termination of membership, revocation of certification, and/or other disciplinary actions if they: (a) are convicted of a felony that involves violence against people or animals (b) engage in conduct which could lead to conviction of a felony, or a misdemeanor, related to their qualifications or functions; (c) engage in cruelty, abuse, or neglect of animals or humans, crimes against humanity or of violence against animals or humans; (d) fail to cooperate with the organization at any point from the inception of an ethical complaint through the completion of all proceedings regarding that complaint. Any member, or member applicant, who wishes to appeal the termination may do so in accordance with the complaints process.

Principle I: Responsibility to Clients

- 1.1 Trainers/behavior consultants provide professional assistance to persons without discrimination on the basis of race, age, ethnicity, socioeconomic status, disability, gender, health status, religion, political beliefs, national origin, or sexual orientation.
- 1.2 Trainers/behavior consultants are aware of, and comply with, applicable laws regarding the reporting of animal bites and suspected abuse or neglect.
- 1.3 Trainers/behavior consultants respect the right of clients to make decisions regarding their pet's management, training and care. Trainers/behavior consultants are responsible for helping clients understand the potential consequences of those decisions.
- 1.4 Trainers/behavior consultants obtain informed consent from clients before videotaping, audio recording, or permitting third-party observation.
- 1.5 Trainers/behavior consultants obtain signed waivers, contracts, or agreements prior to the start of services.
- 1.6 Trainers/behavior consultants ensure and oversee the safety of clients, animals, and the public in implementing training and behavior programs.

Principle II: Confidentiality

- 2.1 Trainers/behavior consultants do not share confidential information that could reasonably lead to the identification of a client, or prospective client, research participant, or other person with whom they have a confidential relationship, unless they have obtained the prior written consent of the client, research participant, or other person with whom they have a confidential relationship.
- 2.2 Trainers/behavior consultants keep accurate and complete records of all clients, their animals, services provided, and the conclusion of the services provided.
- 2.3 Trainers/behavior consultants provide referring veterinarians with professional feedback on services provided and training or behavior plans to improve continuity of care and ensure the collaborative relationship between health and behavior professionals.

Principle III: Professional Competence and Integrity

- 3.1 Trainers/behavior consultants work to minimize the use of aversive stimuli and maximize the effective use of positive reinforcement to modify animal behavior through a Least Intrusive, Minimally Aversive (LIMA) based approach.
- 3.2 Trainers/behavior consultants maintain competence in training and behavior through continuing education.
- 3.3 Trainers/behavior consultants maintain adequate knowledge of, and adhere to, applicable laws, ethics, and professional standards.
- 3.4 Trainers/behavior consultants provide truthful advertising and representation concerning their qualifications, certifications, experience, performance and pricing of services.
- 3.5 Trainers/behavior consultants refrain from providing guarantees regarding the specific outcome of training and behavior plans.
- 3.6 Trainers/behavior consultants provide full disclosure of potential conflicts of interest to clients and other professionals.
- 3.7 Trainers/behavior consultants work within their professional education and individual expertise.
- 3.8 Trainers/behavior consultants seek help and education when confronted with complex or difficult cases, and refrain from taking cases beyond their professional experience.
- 3.9 Trainers/behavior consultants do not advise on problems outside the recognized professional education and certifications, and do not provide advice or recommendations in areas of veterinary medicine or family counseling unless licensed and qualified to do so.
- 3.10 Trainers/behavior consultants do not permit employees, subcontractors or supervisees to perform or to hold themselves out as competent to perform professional services beyond their training, level of experience, and competence based on certification and education.
- 3.11 Trainers/behavior consultants exercise care when stating their professional recommendations and opinions through public statements.

Principle IV: Responsibility to the Profession

- 4.1 Trainers/behavior consultants are respectful of colleagues and other professionals and do not condemn the character of their professional acts, nor engage in public commentary, including commentary in public presentations, written media or on websites, internet discussion lists or social media, that is disrespectful, derisive or inflammatory. This includes cyberbullying, that is, the use of electronic media for deliberate, repeated and hostile behavior against colleagues.
- 4.2 Professional trainers/behavior consultants maintain adequate professional liability insurance coverage.

Principle V: Financial Arrangements & Truthful Representation of Services

- 5.1 Prior to entering into the professional relationship, Trainers/behavior consultants clearly disclose and explain to clients all financial arrangements and fees

related to professional services.

- 5.2 Trainers/behavior consultants represent facts truthfully to clients, third party payors and students regarding services rendered.

Principle VI: Advertising

- 6.1 Trainers/behavior consultants accurately represent their competencies, education, training, and experience relevant to their practice of training and behavior.
- 6.2 Trainers/behavior consultants do not use titles that could mislead the public concerning the identity, responsibility, source, and status of those practicing under that name.
- 6.3 Trainers/behavior consultants correct, wherever possible, false, misleading, or inaccurate information and representations made by others concerning the consultant's qualifications, services, or products.
- 6.4 Trainers/behavior consultants do not represent themselves as providing specialized services unless they have the appropriate education, training, or experience.
- 6.5 Trainers/behavior consultants refrain from making misrepresentations regarding marketing and logos for which the practitioner is no longer eligible, and remove logos and claims of certification when no longer maintained by the practitioner.
- 6.6 Trainers/behavior consultants agree to use the most current logos, and follow recommended usage of said marketing materials.
- 6.7 Trainers / behavior consultants shall not commit business fraud, plagiarism or copyright infringement, misuse or misappropriation of logos, trademarks, theft of intellectual property, slander or libel.

Standards of Practice

Amended July 10, 2018

The Standards of Practice provide a framework of principles to convey a collective principle of professionalism, skills and values in positive reinforcement-based training. As members / certificants (collectively referred to as "members"), each individual member will undertake the following:

- To understand and promote Least Intrusive, Minimally Aversive (LIMA) training and behavior work.
- To continue professional development by reading relevant material; attending conferences, workshops and seminars; and pursuing other educational opportunities.
- To review and understand source material and academic texts for information.
- To abstain from representing training and behavioral information as scientific, unless the information is derived from peer-reviewed and published research.
- To refrain from offering guarantees regarding the outcome of training and behavior work.
- To always maintain professionalism through:
 - Providing your services honestly
 - Treating animals and clients respectfully
 - Valuing and preserving the privacy of clients
 - Maintaining professionalism with colleagues and other professionals

_____ Please initial that you have read and agree to abide by the Code of Professional Ethics and Standards of Practice.



Hotel & Travel Information

Welcome to Daytona Beach, Florida

Set against balmy breezes and anchored by miles of clean, hard-packed white sand, Daytona Beach was dubbed “The World’s Most Famous Beach” in the early 1900s. Located on the east coast of Central Florida, Daytona Beach is internationally known for its racing roots, hosting some of the largest motorsports events in the world, including the Daytona 500, also known as the “Great American Race.”

The climate in Daytona Beach is also ideal. The area enjoys mild, year-round temperatures which range from an average of 59.3F (20.6C) in the winter to an average temperature of 78.5F (30.4C) in the summer.

So whether it’s watching a fast-paced sporting event, a relaxing stroll on the beach, or anywhere in between, Daytona Beach can accommodate many different speeds and lifestyles.

Hilton Daytona Beach Oceanfront Resort

Address: 100 North Atlantic Avenue,
Daytona Beach, FL 32118
Phone: 386-254-8200
Toll-free: 866-536-8477

The Hilton Daytona Beach Oceanfront Resort is located directly on Daytona Beach’s only traffic-free beach in the heart of Ocean Walk Village. The resort features 744 oceanfront and sunset view rooms, suites and cabanas. Pamper yourself at The Spa at the Hilton their full-service spa offering the latest treatments



Hilton Daytona Beach Oceanfront Resort

and products. Enjoy one of the hotel’s seven restaurants and lounges including their full-service restaurant, Doc Bales’ Grill, and McCoy’s Rum Room with many featuring oceanfront dining. The Hyde Park Prime Steakhouse is among the dining choices.

Hotel Reservations

Reservations can be made at the Hilton Daytona Beach Oceanfront Resort until Friday, Sept. 16, to ensure accommodations at the discounted attendee rate. Call 386-254-8200 or visit bit.ly/3pJHkYd to receive room rate (\$179 single/double). A credit card is required to hold the room; you will not be charged a deposit.

Be sure to
ask for the APDT
rate when booking
your hotel
reservations!

Parking

- Self-Parking: \$25 per day
- Valet Parking: \$35 per day
- Secure Parking Available
- Covered Parking Available
- In/Out Parking Available
- Other Parking Information – Self parking across street, behind Hog Heaven

Special Notice

Some companies have been known to solicit meeting attendees and exhibitors with offers of lower rates or nonexistent inventory of hotel rooms. Often referred to as “housing pirates” or “housing bandits,” they will phone or email attendees and exhibitors of city-wide events such as this one. It is important to remember these companies are falsely claiming to be affiliated with the event. To protect yourself against these scams, book only with the official Housing Service or host hotel (as identified by APDT and its event website); report solicitations to the APDT at conference@apdt.com immediately, including phone number, email address or web link.

Air Service

Daytona Beach International Airport (DAB) is just five miles from the Hilton Daytona Beach Oceanfront Resort. Information regarding parking, taxicab, Uber, LYFT, etc., can be found at www.flydaytonafirst.com/about-dab/faq.stml



MY PROFESSIONAL
DOG TRAINER IS GOING TO
THE APDT/CAPDT CONFERENCE
IN DAYTONA BEACH!
IS YOURS?



FLORIDA
THE SUNSHINE STATE



**BUILDING BETTER TRAINERS
THROUGH EDUCATION**



Don't forget to register for the 2022 APDT/CAPDT Annual Conference by **October 7!**

Register now at apdt.com/apdt-conference-2022/