



Choice and Training:  
Behavior Issues

Kristina Spaulding, PhD, CAAB  
Irith Bloom, CPDT-KSA, CBCC-KA, CDBC, VSA Faculty

© Kristina Spaulding and The Sophisticated Dog, LLC

1

---

---

---

---

---

---

---

---

Let's Talk Techniques

- Constructional Aggression Treatment (CAT)
- Behavior Adjustment Training (BAT) 1.0
- Behavior Adjustment Training (BAT) 2.0
- Look At That/Check It Out

© Kristina Spaulding and The Sophisticated Dog, LLC

2

---

---

---

---

---

---

---

---

Constructional Aggression Treatment (CAT)

- How does it work?
- What if the dog overreacts?

• NOTE: This is a description of the original version of CAT

© Kristina Spaulding and The Sophisticated Dog, LLC

3

---

---

---

---

---

---

---

---

Behavior Adjustment Training 1.0 (BAT)

- How does it work?
- What if the dog overreacts?

© Kristina Spaulding and The Sophisticated Dog, LLC

4

---

---

---

---

---

---

---

Behavior Adjustment Training 2.0 (BAT)

- How does it work?
- What if the dog overreacts?

© Kristina Spaulding and The Sophisticated Dog, LLC

5

---

---

---

---

---

---

---

Look At That/Check It Out\*

- How does it work?
- What if the dog overreacts?

\*I say "Check It Out" to avoid disagreements

© Kristina Spaulding and The Sophisticated Dog, LLC

6

---

---

---

---

---

---

---

### Activity

- On a scale of 1 to 10, how much agency does a dog get with...
  - CAT
  - BAT 1.0
  - BAT 2.0
  - LAT/CIO

© Kristina Spaulding and The Sophisticated Dog, LLC

7

---

---

---

---

---

---

---

---

### Activity

- **Task:**
  - Create a flow chart: Toxic or tolerable stress?
  - Work in groups of six (you have 15 minutes)
- Handouts:
  - Sample flow chart
  - Post it arrows (feel free to write yes/no on arrows)
- Printed questions
  - No need to use all the questions
  - Add your own questions if you want

© Kristina Spaulding and The Sophisticated Dog, LLC

8

---

---

---

---

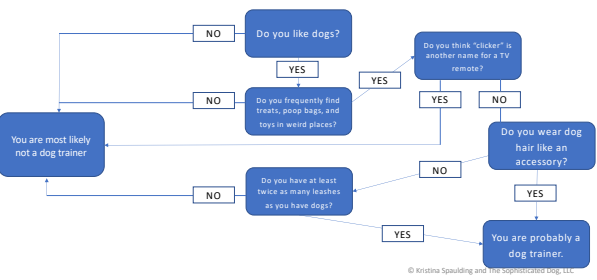
---

---

---

---

### Sample flow chart: Are you a dog trainer?



© Kristina Spaulding and The Sophisticated Dog, LLC

9

---

---

---

---

---

---

---

---

### Activity

- **Task:**
  - Label flowchart with group name/number
  - Leave it on your table
  - Visit other tables to view the flowcharts there
    - Take note of new ideas you like
    - What changes might you make to your flowchart?
    - What makes some flowcharts stronger than others?

© Kristina Spaulding and The Sophisticated Dog, LLC

10

---

---

---

---

---

---

---

---

### Debrief

- Take this information and use it!
  - Create a flow chart for your...
    - Volunteers
    - Clients
    - Adopters

© Kristina Spaulding and The Sophisticated Dog, LLC

11

---

---

---

---

---

---

---

---

### It's all about agency

- Perceived control
- Clark – "agency refers to an animal's ability to gather knowledge and enhance skills for future use (White, 1959)

Spinka and Wemelsfelder, 2011; Clark, 2017

© Kristina Spaulding and The Sophisticated Dog, LLC

12

---

---

---

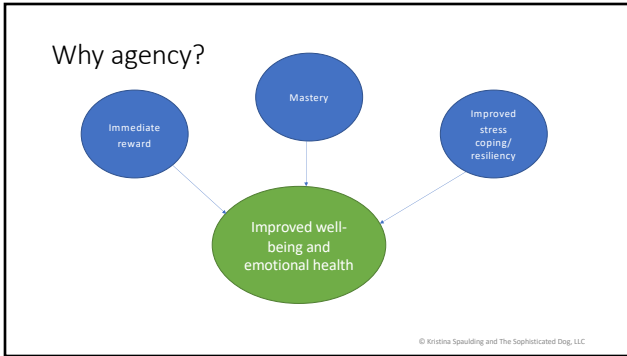
---

---

---

---

---



13

---

---

---

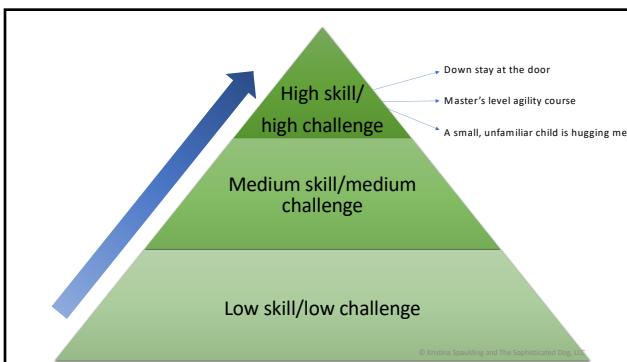
---

---

---

---

---



14

---

---

---

---

---

---

---

---

- Standard suggestions
- Interact or not
  - Choose direction
  - Cooperative care
  - Choose toy/treat
  - Opt out of training
- © Kristina Spaulding and The Sophisticated Dog, LLC

15

---

---

---

---

---

---

---

---

Activity

- Task:
  - Create a choice-rich training plan for a sample dog
  - Go beyond standard suggestions
    - How creative can you get?
  - Five minutes on your own
  - Three minutes with a partner

© Kristina Spaulding and The Sophisticated Dog, LLC

---

---

---

---

---

---

---

---

16

Shared ideas

© Kristina Spaulding and The Sophisticated Dog, LLC

---

---

---

---

---

---

---

---

17

Thank you!

- To all of you!
- To Jennifer Franco and the APDT

© Kristina Spaulding and The Sophisticated Dog, LLC

---

---

---

---

---

---

---

---

18

### Get in touch

- Irith
  - Mailing list: <https://tinyurl.com/mry7tpf3>
  - [Trainer@TheSophisticatedDog.com](mailto:Trainer@TheSophisticatedDog.com)
  - [www.PorterLabs.ai](http://www.PorterLabs.ai)
  - [www.AwesomeDogProject.com](http://www.AwesomeDogProject.com)
  - [www.TheSophisticatedDog.com](http://www.TheSophisticatedDog.com)
- Kristina
  - Mailing list: <http://eepurl.com/grDzPH>
  - [sciencerocks@sciencemattersllc.com](mailto:sciencerocks@sciencemattersllc.com)
  - [www.sciencemattersllc.com/](http://www.sciencemattersllc.com/)

© Kristina Spaulding and The Sophisticated Dog, LLC

---

---

---

---

---

---

---

---